



COVER STORY

Sexy, romantic, sophisticated or eco-chic: Which model is for you?

It may be called Traditions, but this weekend everything is new at Heathwood Homes' development in Milton. New sales office. New release of available lots. And four new model homes put together by renowned designer Bryon Patton and his team at Patton

and Associates.

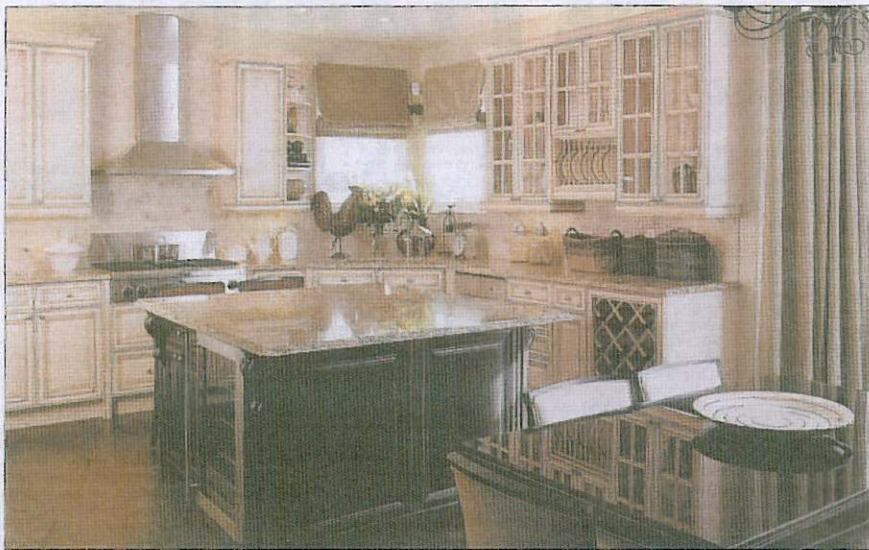
The master-planned community, which will eventually comprise nearly 600 homes, is situated in a traditional neighbourhood at the west end of Old Main Street, adjacent to the Niagara Escarpment, and surrounded by walking

trails, a forest and two parks, winding roadways and bicycle lanes. Many single lots are over 100 feet in depth, and many have views of the escarpment.

-continued on page 3

COVER STORY

Design and location in Milton



-continued from cover

The exteriors of Heathwood's homes reflect Milton's old-Ontario heritage, while inside the open-concept spaces are packed with modern, luxurious features and finishes. And every home at Traditions is Energy Star-qualified, which conserves energy, saves homeowners money and helps the environment.

Buyers can see for themselves by touring "model row" - two singles, one semi and one townhome, each of which Patton has given its own distinct style and personality, aimed at a wide variety of buyers.

The 3,271-square-foot Bronte detached model on a 49-foot lot has a country-chateau theme. "This decor evokes a feeling of timeless traditions and romantic memories," Patton explains. "Antique white, pretty yellows, burnished gold, caledon, patina woods, toile prints and silk create elegant yet calming interiors."

The next model down is the 2,325-square-foot Southwind on a 36-foot lot, which Patton calls "sexy yet serene, glamorous yet feisty." Its new-elegance theme incorporates a palette of rich char-brown, java and tobacco tones accented with flashes of Adriatic blues and crimson. "The urban look radiates boldness and warmth," says Patton.

The 2,260-square-foot Azalea semi-detached model sports an international, eclectic theme. According to Patton, "Here, we mixed classic modern pieces with carefully selected antique accents to showcase a sophisticated yet funky personal style. Winter whites, smoky taupes, onyx and pearl-greys are the background for jewel-tone accents."

The 2,094-square-foot Cardinal Corner townhome highlights many standard features and instantly drew the "I can't believe this is a townhome!" comment from all that toured it during construction. "For this light, airy model, we chose a West Coast eco-chic theme with muted neutrals of tan, khaki and sage to harmonize with all things organic," Patton says. "We worked with soft, sensual chenille, linen and leather textures and added whimsy to the look with exotic ethnic artifacts and accents of lime-green, yellow and spice."

FAST FACTS

Location: Milton

Builder: Heathwood Homes

Prices: Townhomes from \$293,900; semis from \$343,900; detached homes on 36' lots from \$404,900; on 43' lots from \$492,900; on 49' lots from \$549,900. Limited selection of 60' and 70' lots from \$677,900

Features: All homes Energy Star-qualified

To see for yourself: Visit the sales centre on Main Street, just 1/2 km west of Bronte Road. Open Mon. to Thurs. 1-8 p.m., Friday 12-5 p.m., Sat., Sun. and holidays 11 a.m.-6 p.m. Call 905-876-3140 or visit www.heathwood.com.